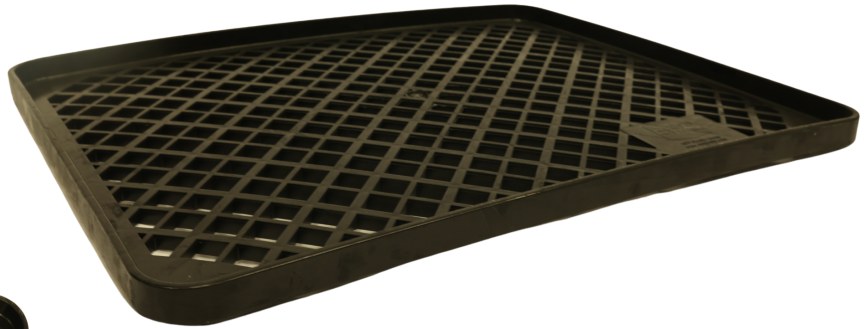


# SPF# T2329



## SPECIFICATIONS

Overall Length (L)	28.6"
Overall Width (W)	22.3"
Overall Height (H)	1.6"
Weight	3.60 LBS
Product Clearance	-
Empty Nest Ratio	1:1
TL QTY	10,400

## ADVANTAGES & FEATURES

- Returnable/Reusable/Recyclable
- Made from durable 100% HDPE resin
- Improved sustainability for the circular economy
- FDA approved colors
- Ergonomic & lightweight designs
- Compatible with existing products in-use
- Molded-in or hot stamp logo options
- RFID or bar code label options
- Made in the USA

\*Description of product is for sales purposes only.